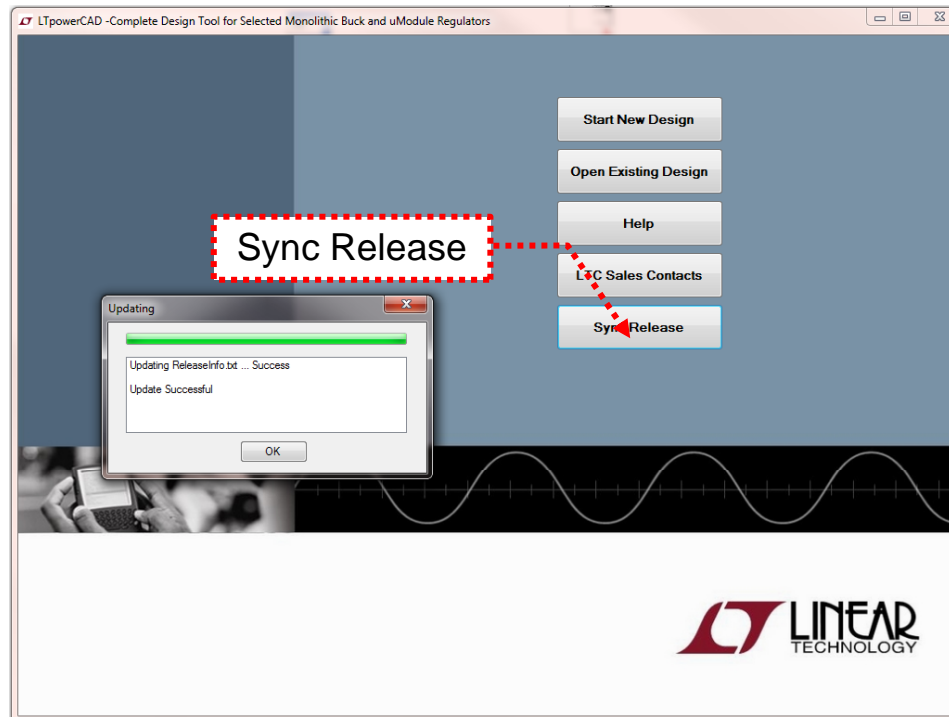


# Sync Release

Click “**Sync Release**” Button on the Main Menu



## NOTE:

The computer needs to have an **internet connection** before using the “Sync Release” function.

# Design Tool Supported LTC Parts List

Updates 12/2011

Product Family	Description	Parts supported by LTpowerCAD™ design tool
LTC3403 family	Low Vin (<5.5V), low current (<1A), monolithic Buck regulators	LTC3403, LTC3404, LTC3405, LTC3405A, LTC3405A-1.5, LTC3405A-1.8, LTC3405A-1.375, LTC3406, LTC3406B, LTC3406-1.2, LTC3406-1.5, LTC3406-1.8, LTC3406B-2, LTC3407, LTC3407-2, LTC3407-3, LTC3407-4, LTC3409, LTC3410, LTC3410-1.2, LTC3410-1.65, LTC3410-1.875, LTC3410B, LTC3419, LTC3547, LTC3549
LTC3411 family	Low Vin (<5.5V), high current (>1A), monolithic Buck	LTC3411, LTC3411A, LTC3412, LTC3412A, LTC3413, LTC3414, LTC3415, LTC3416, LTC3417, LTC3417A, LTC3418, LTC3561, LTC3568, LTC3417A-2, LTC3615
LTC3602 family	Middle Vin (<15V), low current (<6A), monolithic Buck	LTC3602, LTC3603, LTC3612, LTC3614, LTC3616, LTC3614, LTC3616, LTC3633
LTC3610 family	High Vin (<32V), high current (>=5A), monolithic Buck	LTC3605, LTC3608, LTC3609, LTC3610, LTC3611
LTM46xx family	Single output μModule Buck regulators (up to 36Vin, 12A)	LTM4600, LTM4600HV, LTM4601, LTM4601HV, LTM4601-1, LTM4602, LTM4602HV, LTM4603, LTM4603HV, LTM4603-1, LTM4604, LTM4608, LTM4606, LTM4611, LTM4612, LTM4613, LTM4618, LTM4627
LTM46xx family	Buck-Boost μModule (up to 36Vin, 5A)	LTM4605, LTM4607, LTM4609
LTM46xx family	Dual outputs μModules Buck regulators	LTM4614, LTM4615, LTM4616, LTM4619, LTM4627, LTM4628
LTM80xx family	Single output μModules Buck regulators	LTM8021, LTM8022, LTM8023, LTM8025, LTM8027, LTM8031, LTM8032, LTM8033

**NOTE:**

LTpowerCAD™ Design Tool Supports a Limited number of Monolithic and uModule Parts. Parts not listed may be supported. For the latest list of supported parts click “All Parts” button on the LTpowerCAD *New Design* window. Please Visit [www.linear.com](http://www.linear.com) or Call Your Local Sales Representative for More Information .